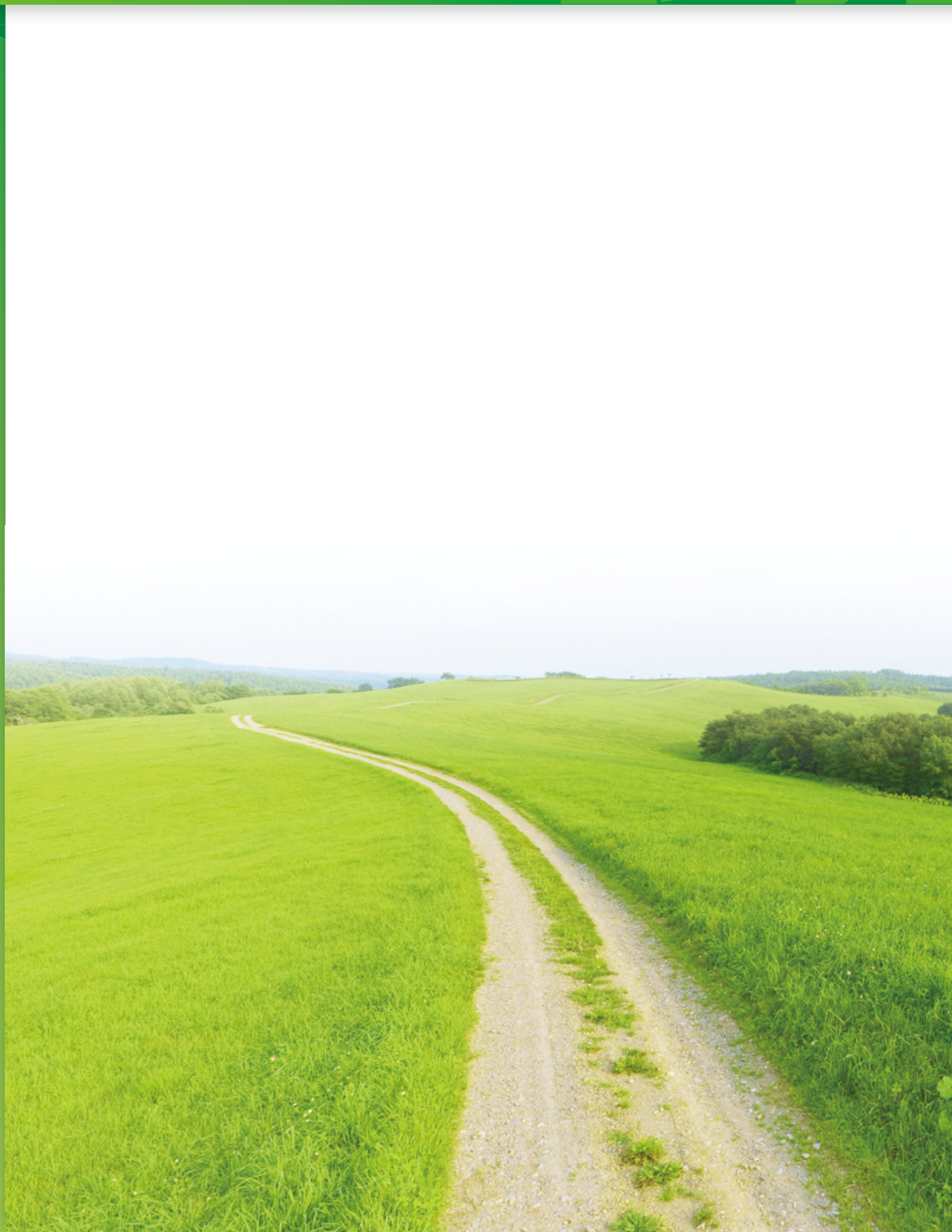


Environmental conservation results for fiscal 2010

## Related data



## Groundwater

Keihin constantly observes wells at its production plants to check for substances which pollute groundwater and have found no problems.

### ■ Measured substance

Measured substance	Legal reference value	Kakuda Plant 1	Kakuda Plant 2	Kakuda Plant 3	Marumori Plant
Cyanide	No detection	—	—	—	—
Hexavalent chromium	0.05 mg/l or less	Less than 0.005	Less than 0.005	—	Less than 0.005
Lead	0.01 mg/l or less	—	—	—	—
1,1-dichloroethylene	0.02 mg/l or less	—	—	—	—
1,1,1-trichloroethylene	1 mg/l or less	Less than 0.1	Less than 0.1	Less than 0.001	Less than 0.1
Dichloromethylene	0.02 mg/l or less	—	—	—	—
Cys-1,2-dichloroethylene	0.04 mg/l or less	—	—	—	—
1,2-dichloroethane	0.004 mg/l or less	—	—	—	—
Trichloroethylene	0.03 mg/l or less	—	—	—	—
Tetrachloroethylene	0.01 mg/l or less	—	—	—	—
Fluorine	0.8 mg/l or less	—	—	—	—
Boron	1 mg/l or less	—	—	—	—

\* "—" indicates no data available because of no history of use.

\* "Less than" means quantitative limit values or less.

#### Kawasaki Plant

Harmful substances (fluorine, lead, arsenic, etc.) were detected on the premises and some of the leased land of the closed Kawasaki Plant in September 2009. We subsequently found they had no effects on groundwater and the surrounding environment. We are taking the required actions in accordance with the instructions given by administrative agencies.

## Domestic base data

### Kakuda Plant 1

**Address:** 213 Takahata-minami, Kajika, Kakuda-shi, Miyagi Prefecture

**Main products:** Motorcycle and power products, fuel supply system products for automobiles

**Employees:** 781

#### Air quality

No.	Regulated item	Unit	Facility	Standard	Measured value
1	Soot and dust	g/Nm <sup>3</sup>	Gas boiler No. 1	0.1 or less	Less than 0.010
			Gas boiler No. 2	0.1 or less	Less than 0.010
			Gas boiler No. 3	0.1 or less	Less than 0.010
			Gas boiler No. 4	0.1 or less	Less than 0.010
			Reverberating furnace Chilled and hot water generator	0.2 or less 0.1 or less	Less than 0.010 —
2	Sulfur oxide	Nm <sup>3</sup> /h	Gas boiler No. 1	3.31 or less	Less than 0.010
			Gas boiler No. 2	3.34 or less	Less than 0.010
			Gas boiler No. 3	3.35 or less	Less than 0.010
			Gas boiler No. 4	3.33 or less	Less than 0.010
			Reverberating furnace Chilled and hot water generator	6.21 or less 2.17 or less	0.156 —
3	Nitrogen oxide	ppm	Gas boiler No. 1	150 or less	65
			Gas boiler No. 2	150 or less	86
			Gas boiler No. 3	150 or less	35
			Gas boiler No. 4	150 or less	34
			Reverberating furnace Chilled and hot water generator	180 or less 150 or less	50 —

#### Water quality

No.	Regulated item	Unit	Standard	Measured value
1	Hydrogen-ion concentration	PH	5.8~8.6	7.9
2	Biochemical oxygen demand	mg/ℓ	300	3.7
3	Amount of suspended substances	mg/ℓ	300	13
4	Normal hexane extracts	mg/ℓ	5 or less	Less than 1
5	Chromium content	mg/ℓ	2 or less	Less than 0.1

#### Energy

No.	Item	Unit	Achieved value
1	Electricity consumed	1,000 kWh	10,977
2	Fuel consumed	KL	154
3	Fuel gas consumed	ton	749
4	Water consumed	m <sup>3</sup>	130,324

#### Waste materials

No.	Item	Unit	Achieved value
1	Generated volume	ton	265
2	Final disposal amount	ton	0

#### PRTR substances

(kg)

No.	Substance name	Volume handled	Atmospheric emissions	Volume transferred	
				Sewage	Other than bases
1	1-bromopropane	2,339	1,380	—	959
2	Boron compounds	1,824	—	—	1,824
3	Methylnaphthalene	1,992	1,992	—	—
Total		6,155	3,372	0	2,783

### Kakuda Plant 2

**Address:** 3 Miyayachi, Sakura, Kakuda-shi, Miyagi Prefecture

**Main products:** Fuel supply system products for automobiles, air conditioning system products (throttle bodies, plastic intake manifolds, compressors, etc.)

**Employees:** 799

#### Air quality

No.	Regulated item	Unit	Facility	Standard	Measured value
1	Soot and dust	g/Nm <sup>3</sup>	Small boiler	0.3 or less	0.01
			Melting furnace No. 1	0.2 or less	0.066
2	Sulfur oxide	Nm <sup>3</sup> /h	Small boiler	4.37 or less	0.401
			Melting furnace No. 1	3.16 or less	0.219
3	Nitrogen oxide	ppm	Small boiler	180 or less	110
			Melting furnace No. 1	180 or less	39

#### Water quality

No.	Regulated item	Unit	Standard	Measured value
1	Hydrogen-ion concentration	PH	5.7~8.7	7.0
2	Biochemical oxygen demand	mg/ℓ	300	66
3	Amount of suspended substances	mg/ℓ	300	36
4	Normal hexane extracts	mg/ℓ	30 or less	8
5	Chromium content	mg/ℓ	2 or less	Less than 0.1

#### Energy

No.	Item	Unit	Achieved value
1	Electricity consumed	1,000 kWh	18,106
2	Fuel consumed	KL	678
3	Fuel gas consumed	ton	327
4	Water consumed (ground water)	m <sup>3</sup>	47,669
5	Water consumed (tap water)	m <sup>3</sup>	57,182

#### Waste materials

No.	Item	Unit	Achieved value
1	Generated volume	ton	367
2	Final disposal amount	ton	0

#### PRTR substances

(kg)

No.	Substance name	Volume handled	Atmospheric emissions	Volume transferred	
				Sewage	Other than bases
1	Methylnaphthalene	9,499	9,499	—	—
2	Antimony and other compounds	2,095	—	—	153
Total		11,594	9,499	0	153

## Domestic base data

### Kakuda Plant 3

**Address:**4-3 Miyayachi, Sakura, Kakuda-shi, Miyagi Prefecture

**Main products:**Motorcycle and power products, electronic control unit system products for automobiles (for engine and chassis ECU)

**Employees:**676

#### Air quality

No.	Regulated item	Unit	Facility	Standard	Measured value
1	Soot and dust	g/Nm <sup>3</sup>	Gas boiler No. 1	0.3 or less	0.026
			Gas boiler No. 2	0.3 or less	0.012
2	Sulfur oxide	Nm <sup>3</sup> /h	Gas boiler No. 1	1.4 or less	0.15
			Gas boiler No. 2	1.4 or less	0.19
3	Nitrogen oxide	ppm	Gas boiler No. 1	180 or less	120
			Gas boiler No. 2	180 or less	100

#### Water quality

No.	Regulated item	Unit	Standard	Measured value
1	Hydrogen-ion concentration	PH	5.7~8.7	8.3
2	Biochemical oxygen demand	mg/ℓ	600	210
3	Amount of suspended substances	mg/ℓ	600	110
4	Normal hexane extracts	mg/ℓ	30 or less	16

#### Energy

No.	Item	Unit	Achieved value
1	Electricity consumed	1,000 kWh	7,613
2	Fuel consumed	KL	60
3	Fuel gas consumed	ton	10
4	Water consumed	m <sup>3</sup>	18,097

#### Waste materials

No.	Item	Unit	Achieved value
1	Generated volume	ton	116
2	Final disposal amount	ton	0

#### PRTR substances

(kg)

No.	Substance name	Volume handled	Atmospheric emissions	Volume transferred	
				Sewage	Other than bases
1	HCFC-225	5,391	4,944	—	447
2	Toluene	8,298	1,826	—	3,268
Total		13,689	6,770	0	3,715

### Marumori Plant

**Address:**97 Terauchi-mae, Marumori-machi, Igu-gun, Miyagi Prefecture

**Main products:**Fuel supply system products for automobiles (injectors)

**Employees:**459

#### Air quality

No.	Regulated item	Unit	Facility	Standard	Measured value
1	Soot and dust	g/Nm <sup>3</sup>	Gas boiler No. 1	0.3 or less	Less than 0.01
			Gas boiler No. 2	0.3 or less	Less than 0.01
			Aluminum melting furnace	0.3 or less	0.029
2	Sulfur oxide	Nm <sup>3</sup> /h	Chilled and hot water generator	0.1 or less	Less than 0.01
			Gas boiler No. 1	1.32 or less	0.343
			Gas boiler No. 2	1.36 or less	0.333
			Aluminum melting furnace	6.19 or less	0.005
3	Nitrogen oxide	ppm	Chilled and hot water generator	1.42 or less	Less than 0.01
			Gas boiler No. 1	180 or less	80
			Gas boiler No. 2	180 or less	77
			Aluminum melting furnace	180 or less	29
			Chilled and hot water generator	150 or less	69

#### Water quality

No.	Regulated item	Unit	Standard	Measured value
1	Hydrogen-ion concentration	PH	5.8~8.6	6.9
2	Biochemical oxygen demand	mg/ℓ	30	1.9
3	Amount of suspended substances	mg/ℓ	70	2
4	Normal hexane extracts	mg/ℓ	5 or less	Less than 1
5	Chromium content	mg/ℓ	2 or less	Less than 0.1

#### Energy

No.	Item	Unit	Achieved value
1	Electricity consumed	1,000 kWh	17,376
2	Fuel consumed	KL	234
3	Fuel gas consumed	ton	466
4	Water consumed (ground water)	m <sup>3</sup>	14,832
5	Water consumed (tap water)	m <sup>3</sup>	19,246

#### Waste materials

No.	Item	Unit	Achieved value
1	Generated volume	ton	305
2	Final disposal amount	ton	0

#### PRTR substances

(kg)

No.	Substance name	Volume handled	Atmospheric emissions	Volume transferred	
				Sewage	Other than bases
1	Methylnaphthalene	3,200	3,200	—	—
Total		3,200	3,200	0	0

## Domestic base data

### Sayama Plant

**Address:**481-1 Hiranoshita, Nakashinden, Sayama-shi, Saitama Prefecture

**Main products:**Air conditioning system products (HVAC)

**Employees:**40

#### Energy

No.	Item	Unit	Achieved value
1	Electricity consumed	1,000 kWh	1,666
2	Fuel consumed	KL	—
3	Fuel gas consumed	ton	3
4	Water consumed	m <sup>3</sup>	3,016

#### Waste materials

No.	Item	Unit	Achieved value
1	Generated volume	ton	19
2	Final disposal amount	ton	0

### Tochigi Research & Development Center

**Address:**2021-8 Hoshakuji, Takanezawa-machi, Shiyoa-gun, Tochigi Prefecture

**Main products:**Research and development

**Employees:**1,150

#### Energy

No.	Item	Unit	Achieved value
1	Electricity consumed	1,000 kWh	14,712
2	Fuel consumed	KL	—
3	Fuel gas consumed	ton	47
4	Water consumed	m <sup>3</sup>	35,304

#### Waste materials

No.	Item	Unit	Achieved value
1	Generated volume	ton	73
2	Final disposal amount	ton	0

#### PRTR substances

(kg)

No.	Substance name	Volume handled	Atmospheric emissions	Volume transferred	
				Sewage	Other than bases
1	Toluene	1,708	1,428	—	280
2	HCFC-141b	1,222	371	—	851
Total		2,931	1,799	0	1,131

### Suzuka Plant

**Address:**3361-1, Ichigaya, Kou-cho, Suzuka-shi, Mie Prefecture

**Main products:**Kakuda Research & Development Center

**Employees:**39

#### Energy

No.	Item	Unit	Achieved value
1	Electricity consumed	1,000 kWh	1,419
2	Fuel consumed	KL	—
3	Fuel gas consumed	ton	1.0
4	Water consumed	m <sup>3</sup>	7,746

#### Waste materials

No.	Item	Unit	Achieved value
1	Generated volume	ton	10
2	Final disposal amount	ton	0

### Kakuda Research & Development Center

**Address:**197-1 Nagare, Kakuda, Kakuda-shi, Miyagi Prefecture

**Main products:**Research and development

**Employees:**351

#### Energy

No.	Item	Unit	Achieved value
1	Electricity consumed	1,000 kWh	4,639
2	Fuel consumed	KL	34
3	Fuel gas consumed	ton	9
4	Water consumed	m <sup>3</sup>	24,323

#### Waste materials

No.	Item	Unit	Achieved value
1	Generated volume	ton	54
2	Final disposal amount	ton	0

#### PRTR substances

(kg)

No.	Substance name	Volume handled	Atmospheric emissions	Volume transferred	
				Sewage	Other than bases
1	Toluene	1,746	161	—	1,584
2	Xylene	1,115	510	—	604
Total		2,861	671	0	2,188

## Domestic base data Domestic subsidiary companies

### Nasu Seiki Manufacturing Co., Ltd.

**Address:** 818 Kanaga, Nasukarasuyama-shi, Tochigi Prefecture  
**Main products:** Motorcycle and power products, fuel supply system products for automobiles  
**Employees:** 96

#### Energy

No.	Item	Unit	Achieved value
1	Electricity consumed	1,000 kWh	4,465
2	Fuel consumed	KL	45
3	Fuel gas consumed	ton	25
4	Water consumed	m <sup>3</sup>	1,905

#### Waste materials

No.	Item	Unit	Achieved value
1	Generated volume	ton	28
2	Final disposal amount	ton	0

### Kanazu Manufacturing Co., Ltd.

**Address:** 125-3 Aramachi, Oyama, Kakuda-shi, Miyagi Prefecture  
**Main products:** Fuel supply systems for motorcycles, power products and automobiles  
**Employees:** 30

#### Energy

No.	Item	Unit	Achieved value
1	Electricity consumed	1,000 kWh	181
2	Fuel consumed	KL	16
3	Fuel gas consumed	ton	37
4	Water consumed	m <sup>3</sup>	852

#### Waste materials

No.	Item	Unit	Achieved value
1	Generated volume	ton	6
2	Final disposal amount	ton	0

### Sakura Plant, Kanazu Manufacturing Co., Ltd.

**Address:** 13-1 Suwawaki-minami, Sakura, Kakuda-shi, Miyagi Prefecture  
**Main products:** Motorcycle and power product peripherals  
**Employees:** 163

#### Energy

No.	Item	Unit	Achieved value
1	Electricity consumed	1,000 kWh	1,641
2	Fuel consumed	KL	-
3	Fuel gas consumed	ton	48
4	Water consumed	m <sup>3</sup>	6,250

#### Waste materials

No.	Item	Unit	Achieved value
1	Generated volume	ton	46
2	Final disposal amount	ton	0

### Keihin Sogyo Co., Ltd.

**Address:** 7 Kurouchi, Oda, Kakuda-shi, Miyagi Prefecture  
**Main products:** Motorcycle and power products, fuel supply system products for automobiles  
**Employees:** 94

#### Energy

No.	Item	Unit	Achieved value
1	Electricity consumed	1,000 kWh	592
2	Fuel consumed	KL	13
3	Fuel gas consumed	ton	-
4	Water consumed	m <sup>3</sup>	2,039

#### Waste materials

No.	Item	Unit	Achieved value
1	Generated volume	ton	20
2	Final disposal amount	ton	0

### Keihin Watari Co., Ltd.

**Address:** 1-5 Doda, Okuma-koya, Watari-cho, Watari-gun, Miyagi Prefecture  
**Main products:** Motorcycle and power products, fuel supply system products for automobiles  
**Employees:** 400

#### Energy

No.	Item	Unit	Achieved value
1	Electricity consumed	1,000 kWh	7,193
2	Fuel consumed	KL	-
3	Fuel gas consumed	ton	144
4	Water consumed	m <sup>3</sup>	35,204

#### Waste materials

No.	Item	Unit	Achieved value
1	Generated volume	ton	177
2	Final disposal amount	ton	0

### Keihin Valve Corp.

**Address:** 1-9-1 Maruyama, Isogo-ku, Yokohama-shi, Kanagawa Prefecture  
**Main products:** Solenoid valves, motor valves and automatic valves  
**Employees:** 38

#### Energy

No.	Item	Unit	Achieved value
1	Electricity consumed	1,000 kWh	229
2	Fuel consumed	KL	-
3	Fuel gas consumed	ton	9
4	Water consumed	m <sup>3</sup>	888

#### Waste materials

No.	Item	Unit	Achieved value
1	Generated volume	ton	4
2	Final disposal amount	ton	0

## Overseas bases data

### Unites States

#### Keihin Carolina System Technology, LLC.

##### Energy

No.	Item	Unit	Achieved value
1	Electricity consumed	1,000 kWh	10,325
2	Fuel consumed	KL	130
3	Fuel gas consumed	ton	103
4	Water consumed	m <sup>3</sup>	6,297

##### Waste materials

No.	Item	Unit	Achieved value
1	Generated volume	ton	358
2	External disposal volume	ton	358
3	Landfill disposal volume	ton	353

#### Keihin Aircon North America, Inc.

##### Energy

No.	Item	Unit	Achieved value
1	Electricity consumed	1,000 kWh	3,139
2	Fuel consumed	KL	7.7
3	Fuel gas consumed	ton	2.7
4	Water consumed	m <sup>3</sup>	4,304

##### Waste materials

No.	Item	Unit	Achieved value
1	Generated volume	ton	589
2	External disposal volume	ton	589
3	Landfill disposal volume	ton	168

#### Keihin IPT Manufacturing, LLC.

##### Energy

No.	Item	Unit	Achieved value
1	Electricity consumed	1,000 kWh	49,948
2	Fuel consumed	KL	25
3	Fuel gas consumed	ton	133,433
4	Water consumed	m <sup>3</sup>	77,693

##### Waste materials

No.	Item	Unit	Achieved value
1	Generated volume	ton	2,029
2	External disposal volume	ton	502
3	Landfill disposal volume	ton	1,529

#### Keihin Michigan Manufacturing, LLC.

##### Energy

No.	Item	Unit	Achieved value
1	Electricity consumed	1,000 kWh	2,972
2	Fuel consumed	KL	0
3	Fuel gas consumed	ton	0
4	Water consumed	m <sup>3</sup>	17,539

##### Waste materials

No.	Item	Unit	Achieved value
1	Generated volume	ton	141
2	External disposal volume	ton	-
3	Landfill disposal volume	ton	141

### Brazil

#### Keihin Technologia do Brasil Ltda.

##### Energy

No.	Item	Unit	Achieved value
1	Electricity consumed	1,000 kWh	3,696
2	Fuel consumed	KL	3.3
3	Fuel gas consumed	ton	236
4	Water consumed	m <sup>3</sup>	17,580

##### Waste materials

No.	Item	Unit	Achieved value
1	Generated volume	ton	545
2	External disposal volume	ton	0
3	Landfill disposal volume	ton	0

## Overseas bases data

### Thailand

#### Keihin (Thailand) Co., Ltd.

##### ■ Energy

No.	Item	Unit	Achieved value
1	Electricity consumed	1,000 kWh	35,060
2	Fuel consumed	KL	26
3	Fuel gas consumed	ton	966
4	Water consumed	m <sup>3</sup>	327,359

##### ■ Waste materials

No.	Item	Unit	Achieved value
1	Generated volume	ton	1,698
2	External disposal volume	ton	1,698
3	Landfill disposal volume	ton	645

#### Keihin Auto Parts (Thailand) Co., Ltd.

##### ■ Energy

No.	Item	Unit	Achieved value
1	Electricity consumed	1,000 kWh	6,967
2	Fuel consumed	KL	-
3	Fuel gas consumed	ton	23
4	Water consumed	m <sup>3</sup>	45,895

##### ■ Waste materials

No.	Item	Unit	Achieved value
1	Generated volume	ton	317
2	External disposal volume	ton	253
3	Landfill disposal volume	ton	56

### India

#### Keihin Panalfa Ltd.

##### ■ Energy

No.	Item	Unit	Achieved value
1	Electricity consumed	1,000 kWh	528
2	Fuel consumed	KL	21
3	Fuel gas consumed	ton	-
4	Water consumed	m <sup>3</sup>	711

##### ■ Waste materials

No.	Item	Unit	Achieved value
1	Generated volume	ton	241
2	External disposal volume	ton	241
3	Landfill disposal volume	ton	-

#### Keihin FIE Pvt. Ltd.

##### ■ Energy

No.	Item	Unit	Achieved value
1	Electricity consumed	1,000 kWh	9,763
2	Fuel consumed	KL	1,291
3	Fuel gas consumed	ton	126
4	Water consumed	m <sup>3</sup>	131,717

##### ■ Waste materials

No.	Item	Unit	Achieved value
1	Generated volume	ton	36
2	External disposal volume	ton	62
3	Landfill disposal volume	ton	1

## Overseas bases data

### Indonesia

#### P.T. Keihin Indonesia

##### ■ Energy

No.	Item	Unit	Achieved value
1	Electricity consumed	1,000 kWh	5,693
2	Fuel consumed	KL	-
3	Fuel gas consumed	ton	366
4	Water consumed	m <sup>3</sup>	68,116

##### ■ Waste materials

No.	Item	Unit	Achieved value
1	Generated volume	ton	285
2	External disposal volume	ton	203
3	Landfill disposal volume	ton	-

### Taiwan

#### 台灣京濱化油器股份有限公司

##### ■ Energy

No.	Item	Unit	Achieved value
1	Electricity consumed	1,000 kWh	3,488
2	Fuel consumed	KL	5
3	Fuel gas consumed	ton	148
4	Water consumed	m <sup>3</sup>	51,930

##### ■ Waste materials

No.	Item	Unit	Achieved value
1	Generated volume	ton	50
2	External disposal volume	ton	50
3	Landfill disposal volume	ton	0

### Philippines

#### Keihin Philippines Corp.

##### ■ Energy

No.	Item	Unit	Achieved value
1	Electricity consumed	1,000 kWh	811
2	Fuel consumed	KL	2.0
3	Fuel gas consumed	ton	1.0
4	Water consumed	m <sup>3</sup>	3,092

##### ■ Waste materials

No.	Item	Unit	Achieved value
1	Generated volume	ton	133
2	External disposal volume	ton	133
3	Landfill disposal volume	ton	-

## Overseas bases data

### China

#### 東莞京濱汽車電噴裝置有限公司

##### ■ Energy

No.	Item	Unit	Achieved value
1	Electricity consumed	1,000 kWh	14,784
2	Fuel consumed	KL	27
3	Fuel gas consumed	ton	483
4	Water consumed	m <sup>3</sup>	108,703

##### ■ Waste materials

No.	Item	Unit	Achieved value
1	Generated volume	ton	1,187
2	External disposal volume	ton	1,187
3	Landfill disposal volume	ton	14

#### 南京京濱化油器有限公司

##### ■ Energy

No.	Item	Unit	Achieved value
1	Electricity consumed	1,000 kWh	10,074
2	Fuel consumed	KL	36
3	Fuel gas consumed	ton	622
4	Water consumed	m <sup>3</sup>	96,564

##### ■ Waste materials

No.	Item	Unit	Achieved value
1	Generated volume	ton	223
2	External disposal volume	ton	223
3	Landfill disposal volume	ton	-

### United Kingdom

#### Keihin Europe Ltd.

##### ■ Energy

No.	Item	Unit	Achieved value
1	Electricity consumed	1,000 kWh	1,469
2	Fuel consumed	KL	-
3	Fuel gas consumed	ton	-
4	Water consumed	m <sup>3</sup>	4,202

##### ■ Waste materials

No.	Item	Unit	Achieved value
1	Generated volume	ton	112
2	External disposal volume	ton	106
3	Landfill disposal volume	ton	4